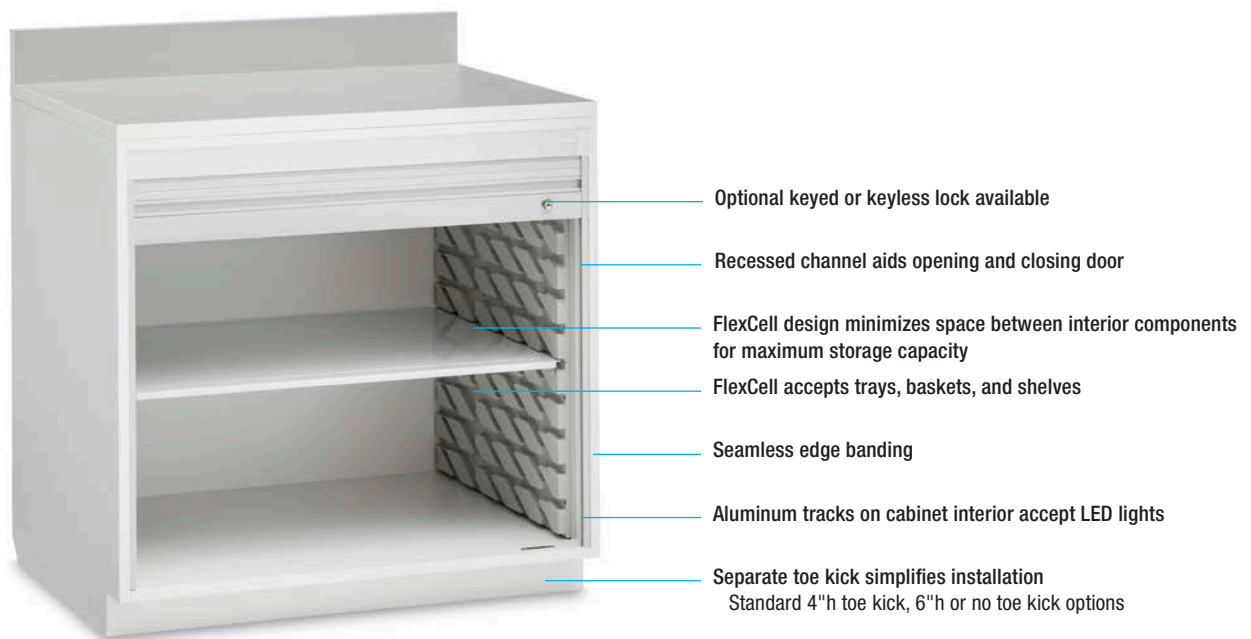


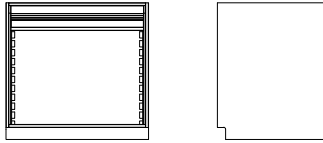
Evolve Base Cabinet with FlexCell and Roll-Top Door

Evolve modular cabinets and casework create a flexible storage system that organizes a hospital's most supply-intensive departments. A clean design and tight construction offer a refined aesthetic and support infection prevention efforts.

The 27.25"-deep, 34.5"-high base cabinet comes in 2 widths. It has a counterbalanced roll-top door. Material choices include compression board with a melamine or specified laminate surface or nonporous AireCore with Glacier White finish, Brushed Aluminum finish, or specified laminate surface. The FlexCell interior provides a durable and cleanable reconfigurable system for trays, baskets, and shelves. Cabinet has a 4"-high toe kick.



Evolve Base Cabinet with FlexCell and Roll-Top Door



Dimensions (Dimensions are nominal)

Exterior (interior):

18.75"w x 27.25"d x 34.5"h (14.5"w x 24.75"d x 23"h)

36"w x 27.25"d x 34.5"h (31.75"w x 24.75"d x 23"h) (shown)

Cabinet with 6"h toe kick is 36.5"h; with no toe kick is 30.5"h

Interior Configuration:

8 FlexCells, 16 in cabinet with center column

Options

- 36"w cabinet can be specified with or without a center column
- Variety of interior components available
- Keyed or keyless lock options available
- Optional 6" toe kick or no toe kick available

Product Number Reference



Product Shown:
SEC2736BRTNC

S	E	C	2	7	3	6	B	R	T		N	C
Product Line	Material	Depth	Width	Cabinet Type	Door Type	Hinge Location	Cabinet Configuration					

Product Numbers

18.75"w x 27.25"d x 34.5"h



Compression board: **SEC2719BRTNC** (shown with optional shelf)

AireCore: SEA2719BRTNC

AireCore and Brushed Aluminum: SEB2719BRTNC

36"w x 27.25"d x 34.5"h



Compression board: **SEC2736BRTNC** (shown with optional shelf)

AireCore: SEA2736BRTNC

AireCore and Brushed Aluminum: SEB2736BRTNC

36"w x 27.25"d x 34.5"h



Compression board: **SEC2736BRTC** (shown with optional trays and shelf)

AireCore: SEA2736BRTC

AireCore and Brushed Aluminum: SEB2736BRTC

Evolve Base Cabinet with FlexCell and Roll-Top Door

Materials and Finishes

Cabinet shell:

Compression board: Thermally fused laminate over 0.75"-thick compression board; melamine surface or specified Wilsonart, Formica, or Pionite standard laminate

AireCore: Aluminum composite with Glacier White finish or specified Wilsonart, Formica, or Pionite standard laminate

AireCore and Brushed Aluminum finish: Aluminum composite with Brushed Aluminum finish

Edge banding:

Compression board and AireCore: White ABS

AireCore with Brushed Aluminum finish: Brushed Aluminum acrylic

FlexCell panel:

Injection-molded ABS

Roll-top door and recessed channel:

Polypropylene



Storage solutions for healthcare

Solairé Medical | P.O. Box 2808 | Grand Rapids, Michigan 49501
888-435-2256 phone | 616-743-5944 fax | solairomedical.com